

Nate Young
Task Plan

Task: Look for and decide on new housing with a friend (house rental, apartment, condo...)

Pre Task: 1-2 min.

Input activity

- Activate prior vocabulary knowledge
 - As a class, look at pictures of various rooms/places and say their names

Warm-up/planning time

- Set the scene, explain the task and make it feel relevant
- Students individually create a list of what they are looking for in the new house
 - What do they need (non-negotiable)?
 - What would they like to have?
 - What is their budget?

During Task: 4-5 min.

Part A, writing: 1 min.

- Send a text message
 - Use information from their list to write a text to their friend

Part B, speaking, negotiation: 3-4 min.

- Give students actual housing options—floorplans, location, cost
- In pairs, students compare their needs, wants, budgets
- They decide together which house they will choose

Post Task: 2-3 min.

Explain choice, reasoning

- Groups share decision with each other
 - Pair up groups (so 4 students total: one pair with another pair)
 - Take turns explaining their plan: why they chose the house they chose? did they have to compromise?



Add task/Perspective-taking: 2-3 min.

New perspective

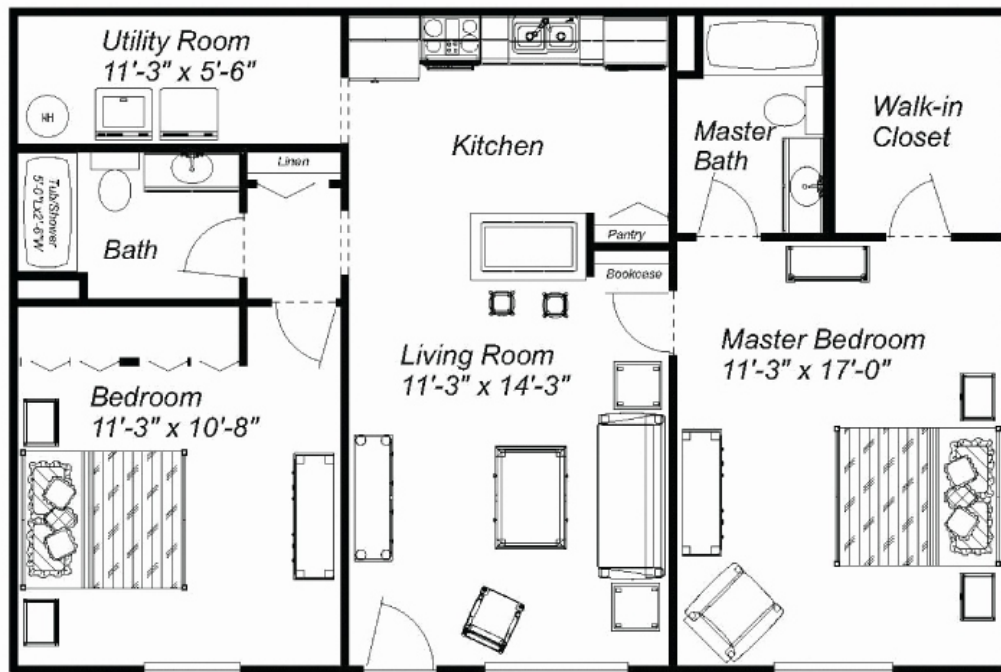
- “You are now the person renting out or subletting the house” (maybe the student is going abroad for the summer)
- Write an ad—provide some new adjectives (charming, comfortable, spacious, cozy, generous, modern, traditional...)
- Meet with a potential renter who is interested
- Using all the vocabulary we’ve learned, convince them! (in pairs, take turns)

Housing Options for Part B of during-task phase



OPCIÓN 1
\$750 AL MES

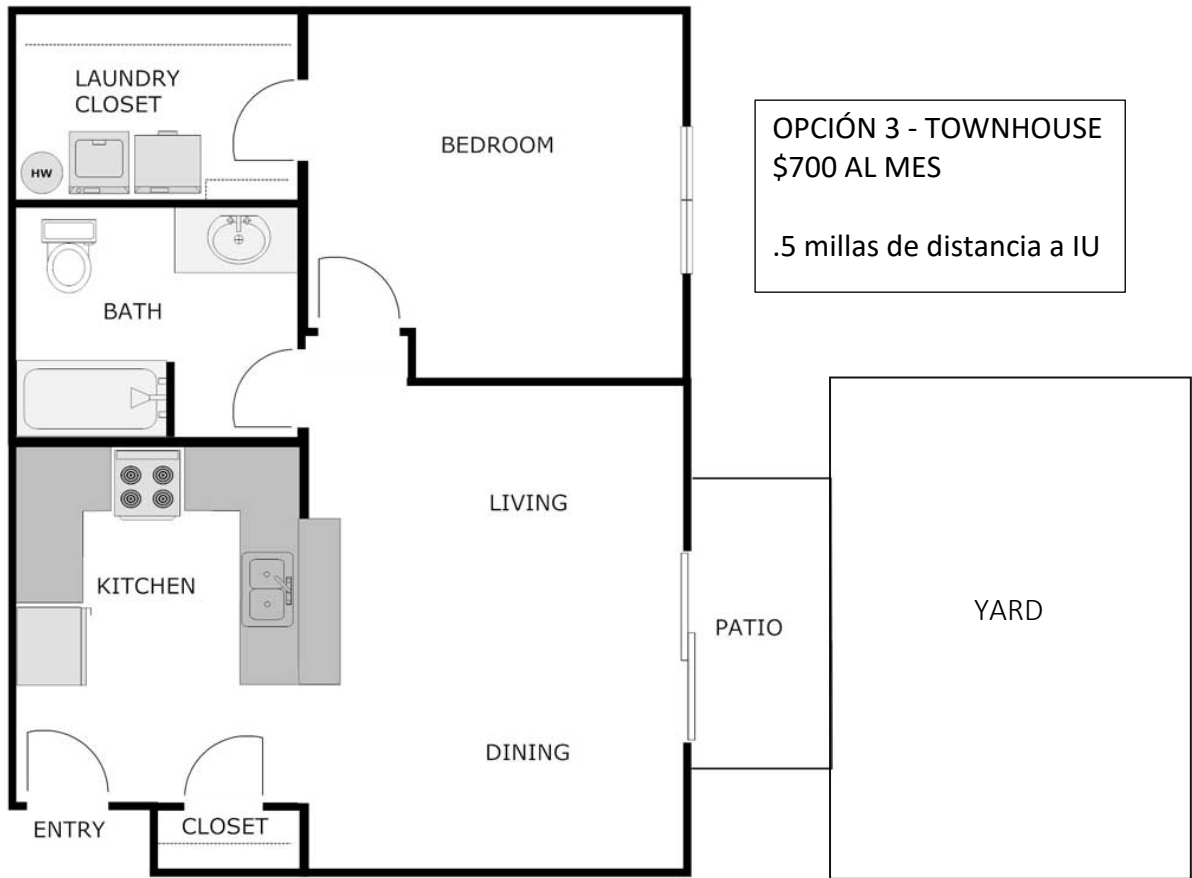
.2 millas de distancia a IU



Two Bedroom - Two Bath

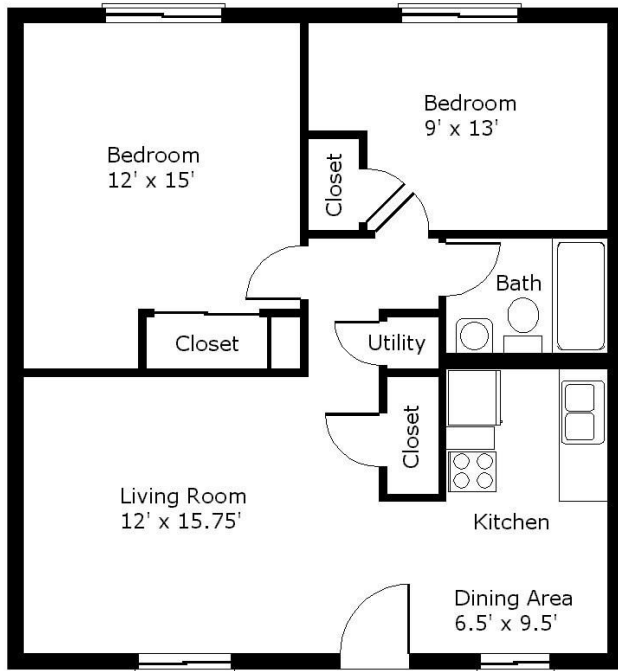
OPCIÓN 2
\$1150 AL MES

1 milla de distancia a IU



OPCIÓN 3 - TOWNHOUSE
\$700 AL MES
.5 millas de distancia a IU

677 SQ.FT



OPCIÓN 4
\$900 AL MES

1.5 millas de distancia a IU

